

# MONTENESSORI FOR EVERYONE

2017 EARLY CHILDHOOD CONFERENCE

Saturday & Sunday, 18-19 March 2017  
Brisbane Convention & Exhibition Centre



## SCHEDULE

### SATURDAY 18 MARCH 2017

8:00am – 8:45am

Registration and Exhibitors

8:45am – 9:00am

Conference Welcome – [Christine Harrison and Barbara Langford](#)

9:00am – 10:00am

Montessori for All Types of Brains – [Laura Flores Shaw](#)

As neuroscientist Daniel Wolpert states, “We have a brain for one reason, and one reason only: to produce adaptable and complex movements.” This means we weren’t born to think – we were born to move. Conventional education has yet to look at the brain in this way, but Maria Montessori understood the importance of movement over 100 years ago. This talk will enhance Montessori educators’ understanding of movement and how it leads to higher cognition, thus providing an environment that works for all types of brains.

10:00am – 11:00am

Early Childhood Professionals: Advocates for the Future of Our World – [Prof Margaret Sims](#)

In an increasingly neoliberal world, our work with young children and their families is becoming more and more focused on compliance. Early childhood professionals worry about working with the National Quality Standards and the Early Years Learning Framework and how they can meet the necessary criteria for accreditation. Our role as advocates is becoming lost, and Prof. Sims argues that this unintended casualty of neoliberalism is a disaster, not only for our own professionalism but for the future of our children. In this talk she will remind us all of the importance of the work we do with children, and the need for us all to continue to challenge what we understand as high quality practice. She highlights the importance of services using different frameworks and working with families and young children who are different from the mainstream, as it is in these services where it is possible to challenge hegemonic assumptions and suggest new directions in our practice.

11:00am – 11:30am

Morning Tea and Exhibitors

11:30am – 12:30pm

Montessori Inclusion – [Michelle Lane-Barmapov](#)

This presentation will review some of the current programs that work with children with a variety of learning differences around the world in Montessori settings. Michelle Lane-Barmapov will discuss the benefits and challenges that some Montessori teachers face when providing inclusive programs. The goal of this presentation is for Montessori teachers to promote inclusion for everyone.

12:30pm – 1:45pm

Lunch and Exhibitors

1:45pm – 2:45pm

Towards Greater Autonomy – [Ned David](#)

Ned shares with us how the Montessori approach to early childhood education is helping shape the future of the Torres Strait Nation – building the foundations for self-management and greater autonomy.



## SCHEDULE

### SATURDAY 18 MARCH 2017 – CONTINUED

2:45pm – 3:00pm

Montessori Australia Resource Division Update – [Katie Denzin](#)

Montessori Australia's new online shop offers an extended product range of Montessori materials and classroom essentials, with 24 hour shipping on stock items and discounts for subscribing schools, centres, their staff and families.

3:00pm – 3:30pm

Afternoon Tea and Exhibitors

3:30pm – 4:30pm

Off to Work We Go! How does it feel at the Frontline for the Montessori Prepared Adult?  
– [Pamela Nunn](#)

What principles are the foundational guidelines for rewarding and satisfying work in Montessori settings? In daily practice do these parameters for adults also align with what is best for the young child? Shining a light on the expected role of the Montessori educator.

4:30pm – 4:45pm

Raffle Draw and Closing Remarks – [Christine Harrison and Barbara Langford](#)

5:00pm – 7:00pm

Conference Reception

Join us for drinks and canapes to network and socialise with your fellow colleagues and speakers.



## SCHEDULE

### SUNDAY 19 MARCH 2017

8:30am – 9:30am

Exhibitors

Delegates select to attend one workshop from Session 1 and one from Session 2. Both Workshop 3's with Ferne van Zyl are also open to the public - parents, carers and family day care providers are welcome to attend.

#### SESSION 1

9:30am – 11:00am

##### WORKSHOP 1: Montessori and Autism\* – [Michelle Lane-Barmapov](#)

This workshop will review the blended Montessori ABA model (Applied Behaviour Analysis) that was created by Michelle Lane-Barmapov in 2003, as well as highlight some of the results from her 2016 thesis titled "Montessori and Autism: An Interpretive Description Study". The goal of this presentation is to provide practical applications for Montessori teachers who are working with a variety of severity levels of children on the autism spectrum.

##### WORKSHOP 2: Music Workshop – [Richard Gill OA](#)

Music in the early life of a child is a form of physical and mental nourishment. Composer and music educator, Richard Gill, explores how and why. In this workshop, participants will be encouraged to take part in rhymes, games and songs appropriate for early childhood use, and to discover the musical values behind each activity.

##### WORKSHOP 3: Montessori in the Home – [Ferne van Zyl](#)

This workshop will provide an introduction to implementing some of Maria Montessori's wonderful insights at home. Participants will learn the importance of simplification and fostering independence by including and involving your children in age appropriate practical life activities. The group will discuss how to practically apply these principles through all of the stages from baby to pre-schooler in the bedroom, bathroom, kitchen, living area and outdoors. This will include practical examples of equipment and how to use it.

11:00am – 11:45am

Morning Tea and Exhibitors

#### SESSION 2

11:45am – 12:45pm

##### WORKSHOP 1: Montessori and Autism (continued)\* – [Michelle Lane-Barmapov](#)

\* Delegates who attend the first session are to continue to the second session. Single session registrations not applicable for this workshop.

##### WORKSHOP 2: Montessori and Differentiation of the Self – [Laura Flores Shaw](#)

This workshop discusses how Montessori's prepared environment fosters each child's differentiation of self. It also provides concrete ways that teachers and parents can further support the children's self-differentiation both within the classroom and at home.

##### WORKSHOP 3: Supporting Language Development from 0-3 – [Ferne van Zyl](#)

0 to 3 years lay the foundation for language development – the richer this base is, the more a child will have to build on. This workshop will discuss some key principles, often not very well understood, that can greatly assist this process. It will explore relationships and the practicalities of engaging in conversation – talking to, not at; and reading with, not to. The importance of slowing down, using a normal voice and a rich vocabulary to talk about the world will be covered in the context of practical, everyday examples. Participants will learn how to choose appropriate books and do other simple language activities with babies and toddlers.

## OPTIONAL ACTIVITIES

### FRIDAY 17 MARCH 2017

#### MONTESSORI SCHOOL AND CENTRE VISITS

A list of Montessori schools and centres in the Brisbane area who will be opening their doors for tours and visits will be advertised on the [conference events page](#).

### SUNDAY 19 MARCH 2017 - OPEN WORKSHOPS

#### WORKSHOPS FOR PARENTS AND FAMILY DAY CARE PROVIDERS

Two of the workshops on the Sunday are also open to the public. For those who will not be attending the full conference, these two workshops may be booked and attended separately. We encourage Montessori schools and centres to share these workshop details with their parent body. They are also suitable for family day care providers who are unable to attend the full conference. Separate brochures are available to download and booking can be made online at the [montessori.org.au](http://montessori.org.au) website Events page. These workshops are:

##### Montessori in the Home

**9:30am – 11:00am**

This workshop will provide an introduction to implementing some of Maria Montessori's wonderful insights at home. Participants will learn the importance of simplification and fostering independence by including and involving your children in age appropriate practical life activities. The group will discuss how to practically apply these principles through all of the stages from baby to pre-schooler in the bedroom, bathroom, kitchen, living area and outdoors. This will include practical examples of equipment and how to use it.

##### Supporting Language Development from 0-3

**11:45am – 12:45pm**

This workshop will discuss some key principles, often not very well understood, that can greatly assist this process. It will explore relationships and the practicalities of engaging in conversation – talking to, not at; and reading with, not to. The importance of slowing down, using a normal voice and a rich vocabulary to talk about the world will be covered in the context of practical, everyday examples. Participants will learn how to choose appropriate books and do other simple language activities with babies and toddlers.





## SPEAKERS



**NED DAVID** is a Kulkalaig – a traditional owner from the Central Islands in the Torres Strait – whose homeland includes Tudu (Warrior Island), Iama (Yam Island) Gebarr (Gabba Island) Mucar (Cap Island) Sassie Zagai (Long Island) the surrounding reefs of Wapa (Warrior reef) and Thidu (Dungeness). Ned is the current Chair of the Torres Strait Islanders Regional Education Council (TSIREC), a position he has held since April 2000. Ned is a member of various committees and forums. These include: Executive Member of the National Congress of Australia's First People; Chair of the Magani Lagaugal Corporation which is the Native Title Registered Body Corporate for Iama (Yam Island) and Tudu; and Secretary of the Torres Strait Islanders Media Association (TSIMA). Ned has a very broad work history that includes government and private sector. Ned's current role as the Manager of Strategic Initiatives Bound for Success Torres Strait involves working across all sectors and agencies to improve life opportunities for all students in the Torres Strait.



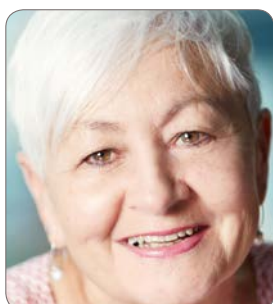
**KATIE DENZIN** is the Managing Director of Montessori Australia's Resourcing Division and oversees the development of its online content. She also supports Montessori Australia through a variety of project management and childcare consultancy roles. Katie first became associated with Montessori in 2007 through her work in the remote communities of the Torres Strait. In partnership with the Montessori Children's Foundation and the Torres Strait Islanders' Regional Education Council, she established Montessori 0-3 education programmes in 13 sites across the Far North Queensland region, including two long day care centres. Since having her daughter Lucy, Katie's passion has focused on ensuring all children in Australia have access to the highest quality Montessori education.



**LAURA FLORES SHAW** is the lead editor, writer, and founder of White Paper Press, a think tank specialising in translating scientific research into terms that allows people to make informed decisions about their lives. She holds bachelors and master degrees in psychology and is currently working towards a doctorate in education with a specialisation in mind, brain and teaching at Johns Hopkins University School of Education. Laura previously worked as a family therapist in the public school system where she realised her desire to work on the prevention rather than intervention side of mental health. That led her to reviving a failing Montessori school where she became passionate about creating environments that allow children to thrive in every way. In 2014, she retired from school administration to focus on advocating at a broader level for frameworks that can improve the lives of children and their families. She currently writes, speaks and consults internationally on education, brain development and parenting.



**RICHARD GILL AO** founding Music Director and Conductor Emeritus of Victorian Opera, is one of Australia's most admired conductors specialising in opera, musical theatre and vocal and choral training and is internationally respected as a music educator. He has been Artistic Director of the Education Program for the Sydney Symphony Orchestra, Artistic Director of OzOpera, Artistic Director and Chief Conductor of the Canberra Symphony Orchestra, and is currently Artistic Advisor for the Musica Viva Education program and Music Director of the Sydney Chamber Choir. Among Richard's numerous accolades include an Order of Australia Medal, the Bernard Heinze Award, Honorary Doctorates from the Edith Cowan University of Western Australia, and the ACU, and the Australia Council's Don Banks Award.



**CHRISTINE HARRISON** has been involved in Montessori education since 1985 and was Principal of the Canberra Montessori School, one of the largest Montessori schools in Australia, for over ten years. She is the founding Chair of the Montessori Australia Foundation and was Chair of the Association of Independent Schools in the ACT and on the Board of the Independent Schools Council of Australia. Christine has been involved in policy development, compliance, student care, curriculum development and educational leadership in schools and has a background in mediation, conflict resolution, adult education and a particular interest in governance in community organisations. She is President of the Montessori Australia Foundation and senior consultant for its divisions Montessori Early Childhood Australia (MECA) and Montessori Centre Management Australia (MCMA).

## SPEAKERS



**MICHELLE LANE-BARMAPOV** was the founder of the Lane Montessori School for Autism (previously known as the Toronto Montessori School for Autism) in Toronto, Canada. She is the founder of the Montessori ABA (Applied Behaviour Analysis) programme for children with autism. Michelle received the Premier's Award from the government of Ontario in 2005 for her programme blend. She currently works as a professor for the Faculty of Applied Health and Community Studies at Sheridan College. Michelle also has her AMS Early Childhood credential, as well as a Master of Health Studies. In 2016, she released her thesis research titled Montessori and Autism: An Interpretive Description Study which can be found through the Athabasca University Digital Thesis Portal at <http://hdl.handle.net/10791/211>. She is also author of the book Autism: A Montessori Approach.



**BARBARA LANGFORD** has been a Montessori teacher for the past 25 years during which time she has established six highly regarded Montessori ECEC centres in Adelaide. Barbara is a passionate advocate for raising the quality of education and care for young children. She spent many years as the President of both Childcare SA and also Childcare Associations Australia enabling her to champion at both a State and Federal Government level for the benefits of high quality early education for children. Barbara also runs a consultancy business called Montessori Management and Mentoring (MMM) through which she offers her expertise to assist others in the establishment of new centres and the training of staff. Barbara is a consultant for Montessori Early Childhood Australia (MECA), a division of Montessori Australia.



**PAMELA NUNN** has worked in the field of education for young children for 30 years and is an AMI 3-6 Teacher Trainer for the Australian Centre for Montessori Studies (ACMS) as well as courses in New Zealand and Vietnam. Pam has been involved with professional development of Montessori teachers through workshops and national conferences in Australia and overseas. She is a Board member of both the Montessori Children's Foundation and Montessori Australia Foundation and is involved in Montessori Quality Assurance and mentor training in Australia. Pam's AMI Examiner appointments have occurred in Melbourne, New Zealand, Thailand, China, Japan, Finland and UK. In 2010 she was appointed as a member of the AMI Training Group. Pam and is also involved in Montessori Ageing Support Services, bringing Montessori philosophy of independence, respect and individual care to senior people.



**MARGARET SIMS** is Professor of Early Childhood at the University of New England and holds BA, MA, PhD, Dip Ed, Dip Mgmt. She worked for many years in community-based services for children and young families: family support, inclusion support and early childhood wrap-around services. Her research interests arise out of this professional experience and she has published widely across a range of topics including infant and toddler pedagogy, family support and integrated service delivery, working with families and young children from diverse backgrounds and the professionalisation of early childhood. Professor Sims has practiced as a clinical psychologist and a community worker at the practical and management levels and maintains an extensive engagement in the children's services/integrated early childhood services profession. Her research with grandparents is available at <http://www.une.edu.au/grandparents>.



**FERNE VAN ZYL** holds an AMI Montessori Assisants to Infancy Diploma, and, in addition to raising her own 4 children, has fostered children, ran a home based family day care, and facilitated programs for babies and toddlers at church. She was the owner and operator of the Montessori centre Down Under 3 and has facilitated successful Faber and Mazlish parent workshops on "How to Talk so Kids will Listen" and "Siblings without Rivalry", as well as her own "Toileting Independence" workshop, earning her the nickname "The Poo-Poo Guru". Ferne currently consults to parents, early childhood centres and schools and mentors with the "Strait Start" programs in the Torres Straits, as well as the Koolkan Early Childhood Centre in Aurukun. Her vision to to see children have the freedom and opportunity to develop their full unique potential by offering training and support to parents and educators.



## BRISBANE CONVENTION & EXHIBITION CENTRE

Cnr Merivale and Glenelg Streets, South Bank, South Brisbane, QLD  
[www.bcec.com.au](http://www.bcec.com.au)

The Brisbane Convention & Exhibition Centre is a world-class purpose-built venue renowned for its operational and service excellence. The Centre is located in a unique urban cultural and entertainment precinct in the heart of Brisbane. Visit their website for directions and details.



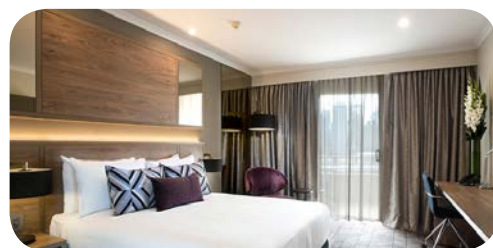
## PREFERRED ACCOMMODATION – RYDGES SOUTH BANK

9 Glenelg Street, South Brisbane

A 10% discount off the Best Flexible Rate is available to delegates attending this conference. Book directly with the hotel via the online bookings portal:  
<http://www.rydges.com/private-page/local-delegate-direct-booking-page>

Or call 07 3364 0800 (citing Montessori for your discount).

Alternative accommodation can be found at [www.bcec.com.au/accommodation](http://www.bcec.com.au/accommodation)



**REGISTER** online at [www.montessori.org.au](http://www.montessori.org.au) or fill in and return the form below

RATES	SUBSCRIBERS*	NON-SUBSCRIBERS
2 day Conference including Conference Reception	<input type="checkbox"/> \$510	<input type="checkbox"/> \$680

\*Discounted rates for Montessori Australia Foundation Individual Subscribers or Staff and Parents of School/Centre Subscribers.

## SUNDAY WORKSHOP PREFERENCES – PLEASE SELECT

☐ **Workshop 1 (Sessions 1 and 2): Montessori and Autism**

**OR** – Select ONE from EACH session:

Session 1:

☐ **Workshop 2: Music**

☐ **Workshop 3: Montessori in the Home \***

Session 2:

☐ **Workshop 2: Montessori And Differentiation of the Self**

☐ **Workshop 3: Language 0-3 \***

\* May also be booked separately - see website for booking details

For catering purposes, please confirm if you will be attending the conference reception:

☐ YES

☐ NO

## REGISTRATIONS CLOSE FRIDAY 10 MARCH

LATE BOOKING FEE OF \$20 APPLIES THEREAFTER, PLACES PERMITTING

PLEASE PRINT CLEARLY:

Name: \_\_\_\_\_

School/Centre Name: \_\_\_\_\_

School/Centre Suburb: \_\_\_\_\_

Mobile: \_\_\_\_\_

Email: \_\_\_\_\_

Please indicate if you have special dietary requirements:

☐ Vegetarian ☐ Gluten Free ☐ Dairy Free ☐ Vegan or

Other: \_\_\_\_\_

Payment Method: ☐ Cheque  
Or charge my: ☐ Visa Card

☐ Invoice School/Centre  
☐ Mastercard

Cardholder's Name: \_\_\_\_\_

Card No: \_\_\_\_\_ CCV (3 digits): \_\_\_\_\_

Signature: \_\_\_\_\_ Expiry Date: \_\_\_\_\_

Refer to our website for event refund and privacy policies.

Montessori Australia Foundation  
PO Box 82 Five Dock NSW 2046  
Phone: 02 9986 2282  
Fax: 02 9986 2281  
Email: [events@montessori.org.au](mailto:events@montessori.org.au)  
ABN: 46 104 887 309